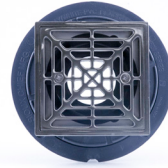
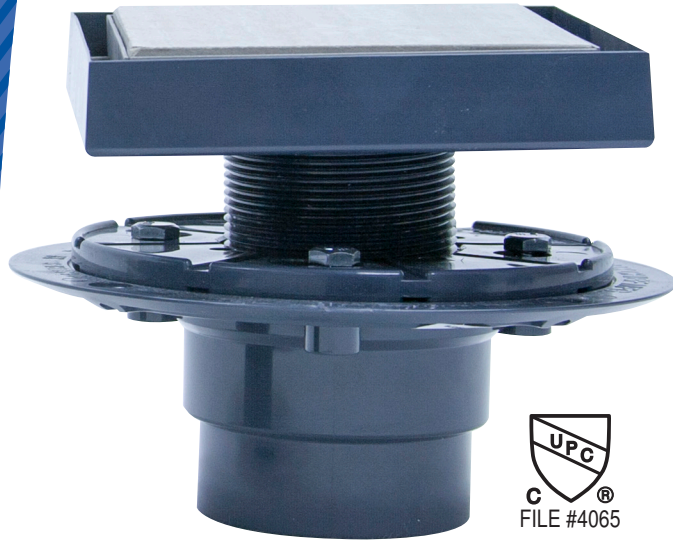


Clamping-Ring Drains

Shower Drains for Watertight Installations

www.noblecompany.com



Polished Stainless
#3926 PVC



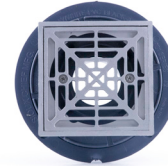
Oil Rubbed Bronze
#3891 PVC / #3927 ABS



Oil Rubbed Bronze
#3881 PVC



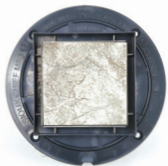
Polished Stainless
#3925 PVC



Matte Silver Stainless
#3924 PVC / #3928 ABS



Matte Silver Stainless
#3923 PVC



Tile Top PVC
4" #3929 / 5" #3930



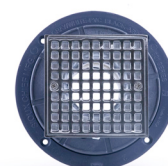
Round Brushed Nickel
#3932 PVC / #3934 ABS



Square Brushed Nickel
#3931 PVC / #3933 ABS



Brushed Golden Nickel
#392 PVC / #3921 ABS



Chrome Plated
#3912 PVC / #3913 ABS



Chrome Plated
#391 PVC / 3911 ABS

Clamping-Ring Drains

High-quality shower drains that create a watertight connection with the waterproofing membrane. Premium components ensure dependable, long-term performance.

- Meet plumbing code requirements
- Ideal for wet areas like tiled showers
- Available with either square or round strainers in various finishes
- Quality construction helps ensure performance
- Mechanical attachment provides waterproofing integrity
- Weep slots and holes on both sides of collar maximize drainage
- Brass inserts in collar and tailpiece prevent damage from over-tightening



VIEW PRODUCT
DETAILS, VIDEOS, AND
DIAGRAMS ONLINE



Clamping-Ring Drains

VIEW PRODUCT
DETAILS, VIDEOS, AND
DIAGRAMS ONLINE



HOW TO SPECIFY

The Noble Company Clamping-Ring Drain should be used where necessary in drainage systems. Drain has a beveled flashing body/adaptor for subfloor installation. Clamping collar fastens to drain body with four stainless steel machine screws that thread into brass inserts. Drain body has a membrane flange and 2" Sch. 40 hub connection. Connection to DWV system shall be made with a solvent wet joint to PVC or ABS pipe. Drains are designed in accordance with ASME A112.18.2-2005 / CSA B125.2-05.

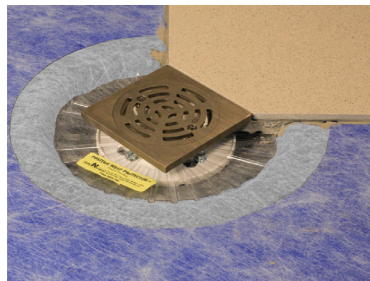
SHAPE / FINISH	PART #	STRAINER LOAD RATING	STRAINER FLOW CAPACITY*	STRAINER MATERIAL	DRAIN BODY
Square Oil Rubbed Bronze	3891	500 lbs.	8 GPM	304 Stainless Steel	PVC
Square Oil Rubbed Bronze	3927	500 lbs.	8 GPM	304 Stainless Steel	ABS
Round Oil Rubbed Bronze	3881	500 lbs.	6 GPM	304 Stainless Steel	PVC
Square Matte Silver Stainless	3924	500 lbs.	8 GPM	304 Stainless Steel	PVC
Square Matte Silver Stainless	3928	500 lbs.	8 GPM	304 Stainless Steel	ABS
Round Matte Silver Stainless	3923	500 lbs.	6 GPM	304 Stainless Steel	PVC
Square Brushed Golden Nickel	392	500 lbs.	8 GPM	Nickel-Bronze	PVC
Square Brushed Golden Nickel	3921	500 lbs.	8 GPM	Nickel-Bronze	ABS
Square Polished Stainless	3926	500 lbs.	8 GPM	304 Stainless Steel	PVC
Round Polished Stainless	3925	500 lbs.	6 GPM	304 Stainless Steel	PVC
Square Chrome Plated	3912	500 lbs.	8 GPM	Chrome Plated Brass	PVC
Square Chrome Plated	3913	500 lbs.	8 GPM	Chrome Plated Brass	ABS
Round Chrome Plated	391	500 lbs.	6 GPM	Chrome Plated Brass	PVC
Round Chrome Plated	3911	500 lbs.	6 GPM	Chrome Plated Brass	ABS
Square Brushed Nickel	3931	500 lbs.	8 GPM	Nickel-Bronze	PVC
Square Brushed Nickel	3933	500 lbs.	8 GPM	Nickel-Bronze	ABS
Round Brushed Nickel	3932	500 lbs.	8 GPM	Nickel-Bronze	PVC
Round Brushed Nickel	3934	500 lbs.	8 GPM	Nickel-Bronze	ABS
Square Tile Top 4"	3929	500 lbs.	5 GPM	Tile & PVC	PVC
Square Tile Top 5"	3930	500 lbs.	8 GPM	Tile & PVC	PVC

*Indicates flow rate of the strainer (not necessarily of the fixture) at 1/4" head.

INSTALLATION EXAMPLES

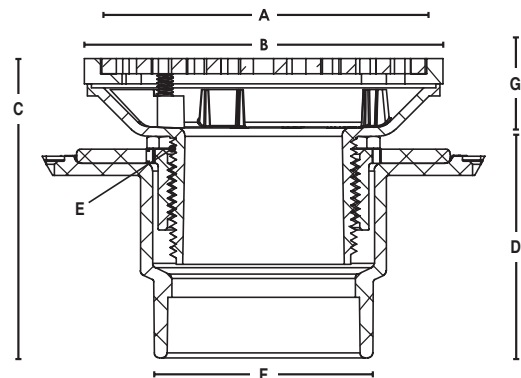


Installed in a full mortar bed method shower with Chloraloy® shower pan liner.



Installed in a thin-bed method shower with NobleSeal® TS waterproofing membrane, NobleFlex Drain Flashing®, and Positive Weep Protector™.

Figure 1



SIZE/DIMENSIONS (refer to Figure 1)

PART #	TOP DIAMETER (A)	FLANGE DIAMETER (B)	ADJUSTABLE HEIGHT (C)	DRAIN BODY HEIGHT (D)	STRAINER HEIGHT (G)	
					MIN	MAX
3912, 3913, 391, 3911**	4.125"	6.625"	3.375" – 5.5"	2.625"	0.75"	2.875"
Tile Top 4"	4" Square	6.625"	1"	2.65"	1.313"	2.0"
Tile Top 5"	5" Square	6.625"	1"	2.65"	1.313"	2.0"
ALL OTHERS	4.5"	6.625"	3.938" – 5.938"	2.625"	1.313"	3.313"

Note: (E) Top housing thread 2" MIPS (F) Connection base adapter 2" Sch. 40 Hub

**CAD details differ slightly from shown.

