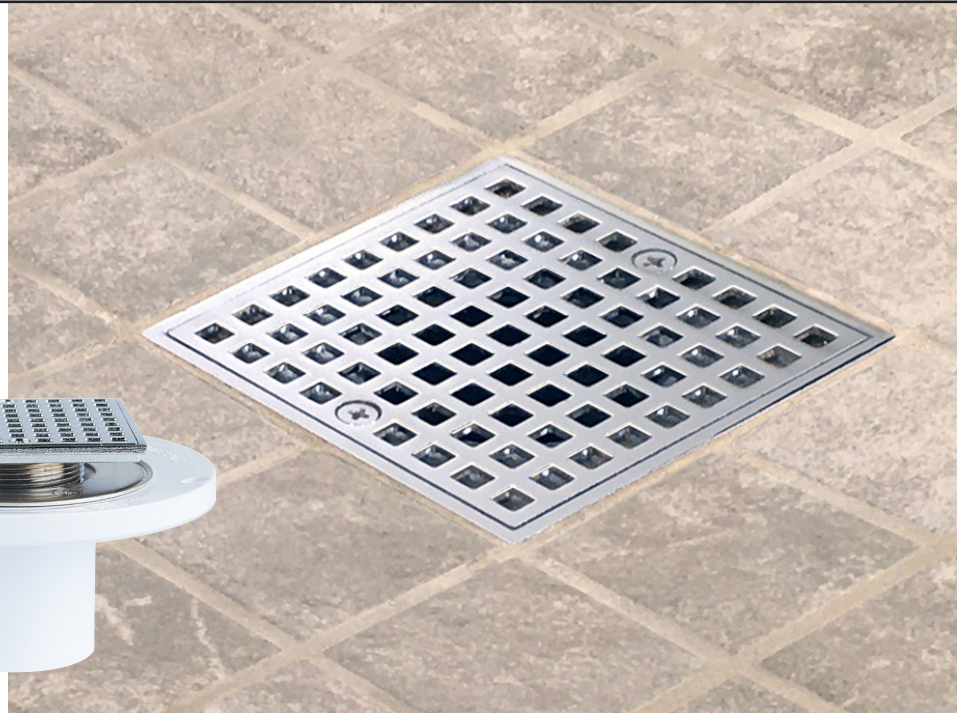
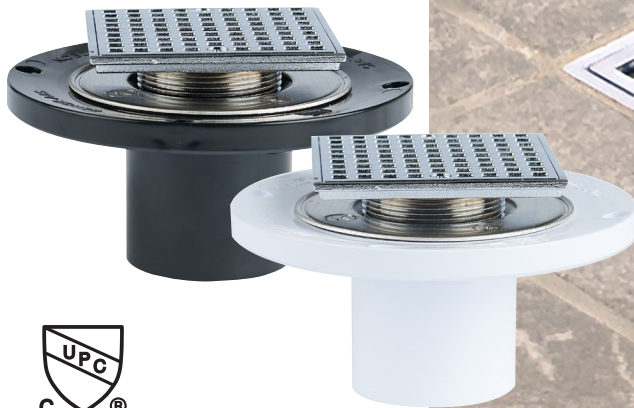


# FreeStyle Thin-Bed Drain™

Low-Profile Shower Drains for Watertight Installations

[www.noblecompany.com](http://www.noblecompany.com)



## FreeStyle Thin-Bed Drains

*High-quality shower drains that create a mechanical connection with the waterproofing sheet membrane. Premium components ensure dependable, long-term performance.*

### BENEFITS

- Meets plumbing code requirements
- Ideal for wet areas like tiled showers
- Square strainers in various finishes
- Quality construction helps ensure performance
- Clamping ring provides waterproof integrity
- Weep slots and holes integrated in drain body maximize drainage
- Brass inserts in base minimize damage from over-tightening
- ABS (black) or PVC (white) drain bases available
- Stainless Steel clamping ring



VIEW MORE PRODUCT  
DETAILS, VIDEOS AND  
DIAGRAMS ONLINE



# FreeStyle Thin-Bed Drain

VIEW MORE PRODUCT  
DETAILS, VIDEOS, AND  
DIAGRAMS ONLINE

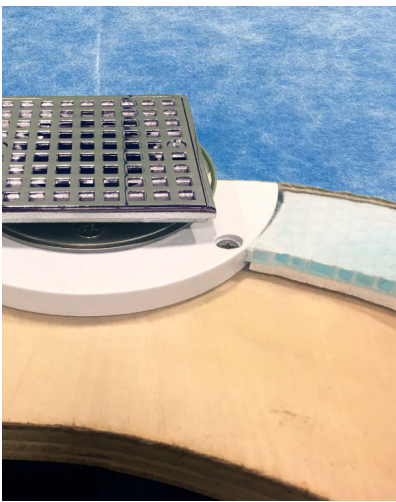


## HOW TO SPECIFY

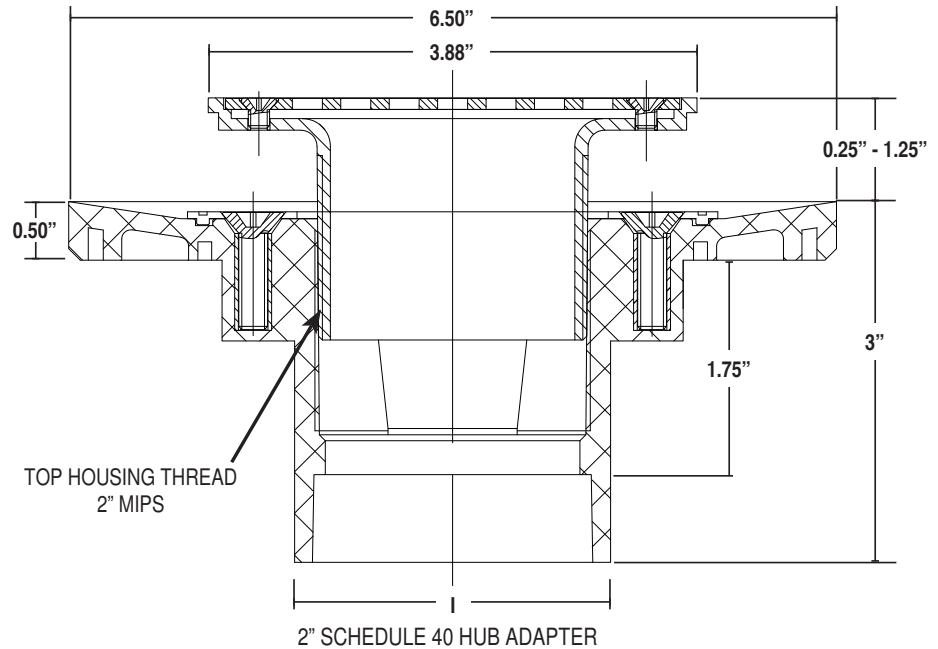
The Noble Company FreeStyle Thin-Bed Drain should be used where necessary in drainage systems. Drain has a beveled flashing body/ adapter for subfloor installation. Clamping ring fastens to drain body with four stainless steel machine screws that thread into brass inserts. Drain body has a membrane flange and 2" Sch. 40 hub connection. Connection to DWV system shall be made with a solvent weld joint to PVC or ABS pipe. Drains are designed and tested in accordance with ASME A112.18.2-2015 / CSA B125.2-15.

All FreeStyle Thin-Bed Drain Strainers have a load rating of 300 lbs. Strainer flow capacity is 10 gallons per minute.

## INSTALLATION EXAMPLE



Installed in a thin-bed method shower with NobleSeal® TS waterproofing sheet membrane and ProBase® II Multi-Slope Shower Base.



## FIVE STANDARD STRAINER FINISHES - other finishes available upon request



Chrome  
#861 PVC | #961 ABS



Brushed Nickel  
#862 PVC | #962 ABS



Oil Rubbed Bronze  
#863 PVC | #963 ABS



Brushed Golden Nickel  
#864 PVC | #964 ABS



Flat Black  
#865 PVC | #965 ABS

Visit our website for complete in-depth instructions, diagrams, and how-to videos on all Noble products. [www.noblecompany.com](http://www.noblecompany.com)



7300 Enterprise Drive, Spring Lake, MI 49456 · (800) 878-5788 · Fax: (231) 799-8850 · [www.noblecompany.com](http://www.noblecompany.com)  
© Registered Trademark of Noble Company™ Trademark of Noble Company © 2022 Noble Company

File #FS072022-14 | 07/22 Supersedes #FS012020-06